

# AB Transport Medium (ABTM) & Swabs

Model name	Tube size	Cap type	Swab type	Storage
ABTM 2 ml · T60201A-S · T60201A-G	ABTM 3 ml · T60301A-S · T60301A-G	16x100mm Screw cap	Flocked	2 to 25°C
Package	50 KIT / Inner box 10 Inner box / 1 Carton box	Shelf life	12 months	



For the collection and transport of clinical specimens containing viruses, chlamydia, mycoplasma or ureaplasma

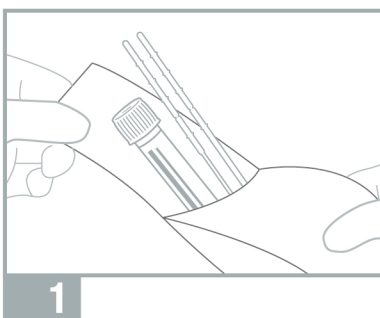
### Characteristic of ABTM

- No Leakage during transport (test approved)
- Self -stand tube design
- Locking cap mold design
- For viral antigen detection test, PCR and Rapid test

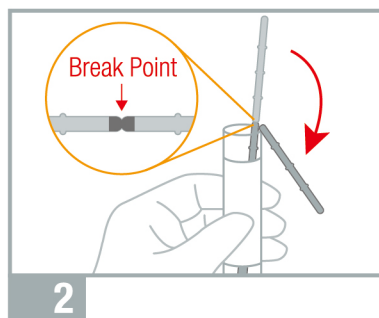
### Characteristic of Swabs

- Double swabs : Nasal swab + Throat swab
- Flocked swab for better sample collection
- Safe Break point
- Slip resistant grip design

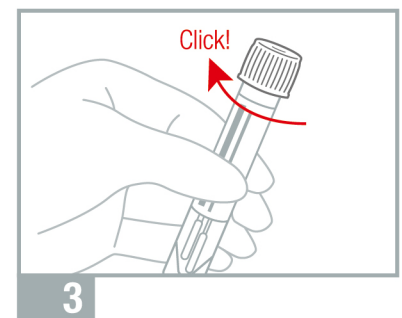
## How to use



Put gloves on and peel off the package. ABTM and 2 Swabs are packed in one package.



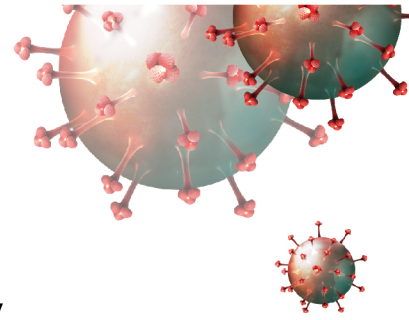
After the sample collection, carefully place the swabs in the ABTM until it reaches the bottom. Easily break the swabs at the molded break point.



Screw the cap of ABTM tightly until it is locked.

# AB Transport Medium(ABTM) & Swabs

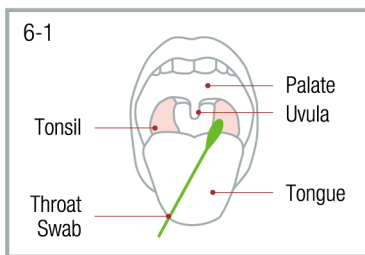
For the collection and transport of clinical specimens containing viruses, chlamydia, mycoplasma or ureaplasma



## Instruction for use

### • Preparation

1. Prepare gloves, masks, pen and AB Transport Medium Kit for sample collection.
2. Check the expiry date and packing status.
3. Wear gloves and masks before the collection.
4. Peel off the kit package and take out the swabs holding the swab handle.
5. Tilt the patient's head back slightly.



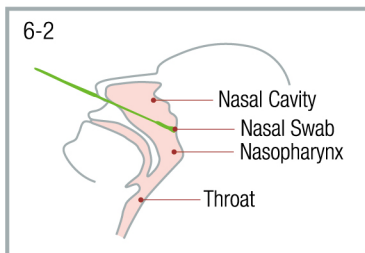
### • Sample Collection

#### 6-1. Throat swab

Without touching the sides of the mouth, swab the back of throat and the tonsil area on both sides of the throat.

#### 6-2. Nasal swab

Insert the tip horizontally until it reaches to the Nasopharynx and rotate the swab 5 times.



#### 7. Withdraw the swabs carefully.

#### 8. Insert the swabs into the ABTM until it reaches to the bottom.

#### 9. Break the swabs at the molded break point.

#### 10. Screw the cap firmly to ensure no leakage.

### • Transport

11. Note the patient's information on the label.
12. Transport the tubes immediately to the laboratories or hospitals.
13. Sample is stable for 48 hours in room temperature and can be stable up to 72 hours in 2-8°C storage.

